

Izveštaj sa konzervatorsko-restauratorskih radova na arheološkom lokalitetu antičke Duklje kod Podgorice

Report form conservation and restoration work on the archeological site ancinent "DOCLEA" near Podgorica

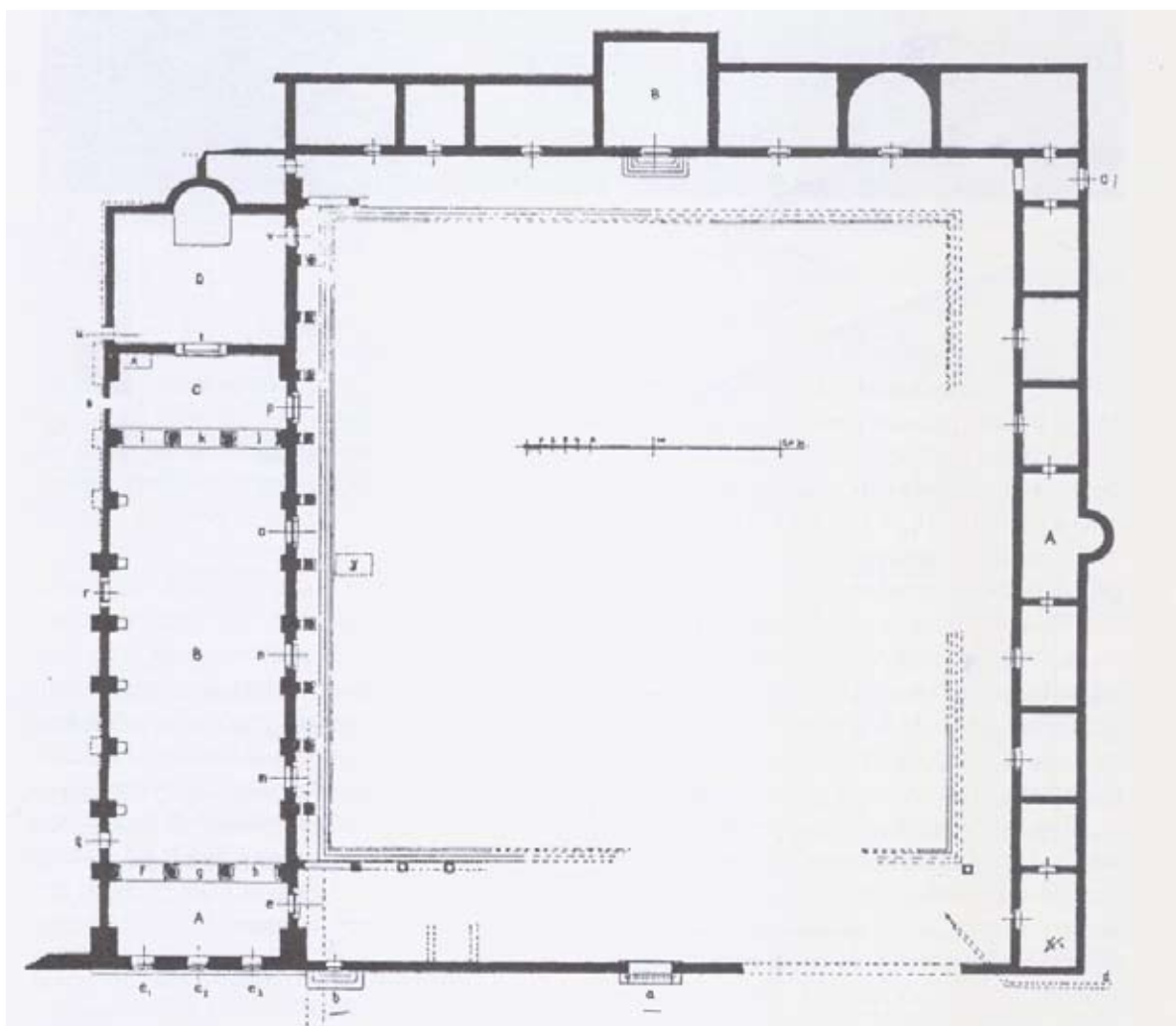
CETINJE, JULI 2009. GODINE.

BOŽIDAR JOVIĆEVIĆ, DIP. KONZERVATOR, SAVJETNIK KONZ.

CETINJE, JULY 2009.

AUTHOR OF THE REPORT:

BOŽIDAR JOVIĆEVIĆ, GRADUATE CONSERVATOR, ADVISOR



**REPUBLIČKI ZAVOD ZA ZAŠTITU SPOMENIKA KULTURE – CETINJE
(ATELJE ZA KONZERVACIJU METALA, STAKLA I KERAMIKE)**

**REPUBLIC INSTITUTE FOR CULTURAL MONUMENTS PROTECTION – CETINJE
(STUDIO FOR CONSERVATION OF METAL, GLASS AND CERAMIC)**

Cetinje, July, 2009 .

1. UVOD U OPŠTE ODREDNICE:

Na osnovu zahtjeva za dostavljanje ponude šoping metodom br. 311 Glavnog grada Podgorice i naše ponude br. 2008, Glavni grad Podgorica je 30. 10. 2007. godine **odlukom o postupku nabavke male vrijednosti** (šoping metodom) izabrao Našu ponudu kao najpovoljniju, i shodno tome predviđeni konzervatorski i drugi poslovi mogu otpočeti u najskorije vrijeme.

Konzervatorsku ekipu čine stručna lica iz Ateljea za konzervaciju metala, stakla i keramike RZZSK Cetinje, kao i dva stručna lica iz Muzeja i galerija Podgorica:

1. Božidar Jovičević – dip. konzervator, savjetnik konz. rukovodilac radova
2. Sanja Šoljaga – dip. konzervator, stručni saradnik
3. Mirjana Ivanović – dip. konzervator, stručni saradnik
4. Mirjana Padalica – tehničar konzervator
5. Petrica Krivokapić – tehničar konzervator
6. Magdalena Radunović - dip. konzervator, savjetnik konz.
7. Mirjana Mugoša - stručni saradnik - konzervator

Konzervatorski radovi su počeli čim su se stekli neophodni uslovi, tačnije 4. 12. 2007. godine.

1. OSNOVNI PODACI O ARHEOLOŠKOM LOKALITETU

Za osnovne podatke o Duklji koristimo izvode iz knjige Spomenici kulture u Crnoj Gori, autora dr Čedomira Markovića i dr Rajka Vuičića.

„Ostaci antičkog grada Duklje nalaze se na zaravnjenom platou formiranom između rijeka Morače i Zete i potoka Širalije, na oko 4 km sjeverno od Podgorice. Kao rimski grad, Duklja je osnovana na samom početku I vijeka nove ere. Istraživanja Duklje su započela krajem XIX vijeka, a nastavljena su sredinom XX vijeka. Tokom desetogodišnjih radova otkriveno je nekoliko novih objekata i izvršena je revizija onih koji su otkriveni u ranijim istraživanjima.“

U blizini presjeka dvije glavne ulice (kardo i dekumanis) nalazi se glavni gradski trg (forum), koji je u ovom trenutku predmet našeg interesovanja i u okviru čije unutrašnjosti ćemo obavljati predviđene konzervatorske radove. Svi naši napori biće usmjereni na očuvanje foruma u cjelini, kao i os-

INTRODUCTION TO GENERAL SPECIFICATIONS:

On the basis of the call for submission of offers according to purchase method No.311 of the capital city, Podgorica and our offer № 2008, the Municipality of Podgorica has chosen our offer as the best by their decision regarding procedure for procurement of low value goods (purchase method), on 30th October 2007 and according to that decision the foreseen conservation and other works can start very soon.

The Conservation Team consists of experts from The Studio for Conservation of Metal, Glass and Ceramics, which belongs to Republic Institute For the Protection of Cultural Monuments – Cetinje, as well as two experts from The Museums And Galleries, Podgorica :

1. Božidar Jovičević – graduate conservator, advisor
2. Sanja Šoljaga – graduate conservator, expert associate
3. Mirjana Ivanović – graduate conservator, expert associate
4. Mirjana Padalica – technical conservator
5. Petrica Krivokapić – technical conservator
6. Magdalena Radunović - graduate conservator, advisor
7. Mirjana Mugoša - expert associate - conservator

Conservation works started as soon as the necessary conditions were fulfilled, more precisely, 4th December 2007.

1. THE BASIC DATA ABOUT THE SITE:

For the description of the basic data about Doclea, I have used excerpts from the book MONUMENTS IN MONTENEGRO, written by Dr. Cedomir Markovic and Dr. Rajko Vuicic.

“The remains of the ancient town of Doclea are situated on the flat plateau formed between the Rivers Moraca and Zeta and Siralija Creek, 4 km north of Podgorica. As a Roman town, Doclea was founded at the very beginning of the 1st century AD. Research in Doclea started at the end of the 19th century. During ten years of research work, several new structures have been discovered and revision of structures discovered in previous works has been carried out”.

Near the intersection of two main streets (Cardo and Decumanis) is the main city square (fo-

posobljavanje cjelokupnog prostora za što bolju prezentaciju i valorizaciju.

2. ZATEČENO STANJE:

Prilikom obilaska lokaliteta u septembru 2007. g. konstatovano je sljedeće:

- Unutar foruma, duž južne i sjeverne strane, postoji veliki broj amorfnih lapida (oko 160 kom.) koji su vjerovatno tokom dosadašnjih istraživanja ostali na tim pozicijama.
- Neophodno je navesti da je veliki broj lapida karakterističnih oblika deponovan van foruma, a po arhitektonskim i kulturnim vrijednostima zaslužuju da se prezentuju unutar forumskog prostora.
- Postoji obiman dio zemljane mase (oko 60 kubika) duž jugoistočne i istočne strane zida foruma. Na prostoru bazilike takođe se nalazi određen broj sondi čiju površinu treba nivelisati.
- U centralnom dijelu foruma se nalazi takođe jedan broj lapida (oko 60) koje po datom elaboratu treba dislocirati, na odgovarajuće mjesto van centralnog dijela foruma.
- Po bočnim ulazima kao i u unutrašnjosti foruma, kameni ispusti i stepenice su djelimično utonule u zemljani sloj, tako da prijeti opasnost od potpune razgradnje tih arhitektonskih elemenata.
- U dijelu bazilike se nalazi određena količina recentnog materijala koji je neophodno ukloniti, a ostatak prostora nivelisati po već utvrđenim kotama, kako bi se ovaj prostor učinio preglednim i dostupnim.
- Ostaci zidova foruma su jako ugroženi i prijeti im dalja razgradnja i djelimično urušavanje. Naročito su ugrožene pojedine partije gdje je višegodišnja vegetacija najbujnija.
- Veliki broj reprezentativnih lapida (oko 100 kom.) unutar i van foruma je neadekvatno raspoređen i njihove pozicije ne omogućavaju optimalnu preglednost.
- Evidentiran je određen broj fragmentovanih lapida čije djelove je neophodno spojiti u jedinstvene cjeline.
- Nedostaje evidencija o ukupnom broju lapida sa svim neophodnim podacima o svakom predmetu pojedinačno.
- Određen broj lapida je u nekim ranijim „akcijama“ nepovratno ugrožen tretmanom

rum), which is the object of our interest at the moment, and in which we will carry out our predicted conservation works. All our efforts will be directed towards the preservation of the forum as a whole, as well as enabling the whole space for better presentation and valorisation.

2. THE CURRENT CONDITION:

During our visit to the site in September 2007 we found the following:

- Inside the forum along the southern and northern sides there are a large number of amorphous tombstones (about 160 pcs) which probably remained in these positions during previous research works.
- It is necessary to mention that a large number of tombstones of a characteristic shape were moved out of the forum, and because of their architectural and cultural value they deserve to be presented inside the forum space.
- There is a huge mass of earth (about 60 m³) along the south-eastern and eastern sides of the forum wall. There are a certain number of exploratory pits on the area of the basilica which need to be levelled.
- There are a number of tombstones (about 60) in the central part of the forum which should be relocated to a suitable place away from the central part of the forum, according to the project report.
- The stone vents and stairways have partially sunk into the earth layer at the side entrances as well as in the inside parts of the forum, so there is a danger of complete retrogression of these architectural elements.
- There is a certain amount of loose material in the area of the basilica which it is necessary to remove, and the rest of the space should be levelled according to the confirmed spot levels, so that this space would be accessible and viewable.
- The forum wall remains are very endangered and threatened by further retrogression and partial falling into ruin. Parts where perennial vegetation is particularly lush are especially endangered.
- The large numbers of representative tombstones (about 100 pcs) inside and outside the forum are inappropriately configured and their positions do not allow optimal visibil-

neadekvatnim hemijskim sredstvima, što je prouzokovalo devastaciju površinskog sloja tretiranih lapida.

- Veći broj kamenih predmeta je fizički oštećen, takođe usljed neadekvatnog transporta sa jedne pozicije na drugu.
- Na jugoistoku i jugozapadu foruma postoje dva antička kanala dužine oko 20 metara. Oni su u velikoj mjeri zatrpani, dok su kameni poklopci kanala nepravilno locirani u neposrednoj okolini.

4. PREDLOG KONZERVATORSKIH MJERA

4.1. Dislocirati amorfne lapide sa južne strane foruma, na određeno mjesto van foruma, jugozapadno od njega, uz prethodno snimanje i obilježavanje. Lapidu koji će se prezentovati uz unutrašnjost zidova foruma raspoređuju se u dva niza, uz povlačenje na manji razmak (za cca 1,5 m), po mogućnosti u svoj autentični položaj.

Obaviti prekompoziciju lapida pomoću snažne hidraulične autodizalice, uz sve mjere predostrožnosti, koje bi garantovale bezbjednost lapida i svih učesnika u pomenutim aktivnostima. Predviđa se dislokacija oko 200 lapida.

4.2. Neophodno je obaviti nivelaciju u okviru prostora foruma, desno od ulaza (jugo-istočna i istočna strana foruma), i pojedini grupisani materijal na prostoru bazilike. Dio zemlje nasuti u udubljenja, a višak odnijeti sa lokaliteta. Radi se o obimnom zemljanom i recentnom materijalu, u količini od oko 40 – 50 m³.

4.3. Obaviti čišćenje i djelimičnu restauraciju antičkih kanala, kao i parcijalno pokrivanje kamenim pločama sa samog lokaliteta. Oba kanala u određenim partijama ostaviti otvorena, kako bi njihova unutrašnjost bila vizuelno dostupna. Na dijelu gdje nedostaju pokrivne ploče izvesti ogradu od željeznih šipki kvadratnih polja sa dijagonalama.

4.4. Takođe prekomponovati cipuse i duge lapide bočno od centralnog dijela sjeverne strane foruma, radi oslobađanja prostora za predviđenu montažnu pozornicu. Prije bilo kakvih pomjeranja lapida neophodno je obaviti sva potrebna mjerenja i foto dokumentaciju svih lapida ili pojedinih fragmenata koji se nalaze u okviru foruma i u neposrednoj blizini.

ity.

- A certain number of fragmented tombstones were noted down, and these parts need to be joined up into units.
- The records regarding the total number of tombstones are missing, as is all the necessary data about all individual items.
- A certain number of tombstones were permanently damaged in some earlier “works” with treatments with inappropriate chemical substances, which caused devastation of the surface layer of the treated tombstones.
- A large number of stone items are damaged also because of inadequately careful transport from one position to another.
- There are two ancient channels to the south-east and south-west of the forum, 20 metres long, which are almost totally blocked up, while the stone covers of the channels are incorrectly located in the immediate surroundings.

4. THE PROPOSAL FOR CONSERVATIONAL MEASURES:

4.1. To carry out relocation of amorphous tombstones from the southern side of the forum, to a specified space outside the forum, on its south-western side, according to previous records and notes. The tombstones which will be presented next to the interior of the forum walls are arranged in two lines, and will be relocated with a smaller space between them (ca. 1.5 m), into their original position, where possible.

To carry out reassembly of tombstones with a strong hydraulic jack taking all precautionary measures, so as to guarantee the safety of tombstones and all participants in the mentioned activities. About 200 tombstones are marked for relocation.

4.2. It is necessary to carry out levelling of the forum, to the right of the entrance (south-east and eastern side of the forum), and of individual material in the basilica. Filling of the holes will be done partially with the earth and surplus excavated material from the site. This is a huge amount of soil and deposited material, about 40 – 50 m³.

4.3. To carry out cleaning and partial restoration of the ancient channels, as well as their par-

- 4.5. Djelimično konzervirati ostatke zidova foruma: konsolidacija gornjih partija zidova u produžnom malteru, sa svim potrebnim pregradnjama. Koristi se kamen pronađen „in situ“, odnosno već pripremljen na širem prostoru lokaliteta. Konzervatorski se tretiraju samo djelovi na kojima je popustila ranija konzervacija, odnosno oni koji do sada nisu rađeni (parterni dio bazilike, dio južnog zida i ostaci zidova okolnih građevina). Sastav maltera: 1:2:5. Odnos sivog i bijelog cementa, kao i način obrade spojnica utvrđuju se probama koje odobrava konzervator. (150 – 180 m)
- 4.6. Neophodni konzervatorski radovi na lapidima, spajanja, konsolidacija, čišćenje, impregnacija, raspoređivanje pojedinih djelova srodnih elementa u zajedničku cjelinu, kao i prezentacija svih najznačajnijih lapida u formi lapidarijuma na otvorenom prostoru. Predviđa se rad na oko 100 lapida.



5. AKCIONI PLAN

- 5.1. Neophodno je obezbijediti osnovne uslove za rad na terenu, a to je sljedeće:
- U obližnjem objektu koji je na raspolaganju mora postojati vodovodna i elektro instalacija.
 - Budući da se uglavnom radi sa kamenim lapidima većih dimenzija, neophodna je mašina koja bi bila u stanju da bezbjedno obavlja manipulisanje predmetima.

tial covering with stone slabs from the same site. Both channels are to be left open in certain parts, so that their interior might be visible. In the parts where the covering slabs are missing, a fence is to be made of iron bars in a diagonal lattice.

- 4.4. Also to reassemble cippi (stone pillars) and long tombstones flanking the central part of the northern side of the forum, to free the space for the envisioned installment of a stage. Before any removal of tombstones, it is necessary to take all measurements needed and provide photographic documentation of all tombstones or individual fragments which are located in the area of the forum or in the immediate vicinity.
- 4.5. To partially preserve the remains of the forum walls: consolidation of the upper parts of the walls in pliable mortar, with all necessary preparatory works. Stone found "in situ" is used, i.e. that which has already been prepared in the wider vicinity of the site. Only parts on which the previous conservation work is in bad shape is to be restored, i.e. those parts which were not treated so far (parterre area of the basilica, part of the southern wall and the remains of the walls of the surrounding buildings). Composition of plaster: 1:2:5. The proportions of grey and white cement, as well as the way of treating the mixture are defined by tests approved by the conservator. (150 – 180 m)
- 4.6. The necessary conservatory works on tombstones, linkages, consolidations, cleaning, impregnations and arranging of some parts of similar elements into single units, as well as presentation of all significant tombstones in the form of an open-air tombstonearium. Work on 100 tombstones is planned.

5. ACTION PLAN:

- 5.1. It is necessary to provide basic working conditions for fieldwork as follows:
- There must be water and electricity supply to the near-by building to be used.
 - Considering the fact that work is mostly with tombstones with large dimensions, it is necessary for certain machinery to be provided to move these objects safely.

- 5.2. Neophodna pomagala (lap-top), alat i materijal za rad, kao i neophodna hemijska sredstva će obezbijediti RZZSK Cetinje.
- Potrebno je voditi dnevnik radova i odgovarajuću dokumentaciju.
 - Organizovanje transporta, konzervatorski rad i vođenje dokumentacije je zadatak izvođača, odnosno RZZSK-Cetinje.
 - Konzervatorski radovi mogu da počnu u novembru 2007. g. a trajaće od 30 do 40 radnih dana.
- 5.2. Kako su predviđeni radovi raznorodne prirode i zahtjeva, sve poslove je neophodno organizovati u određenim fazama.
- Prvo treba obaviti snimanje ukupnog terena i odrediti redosljed postupaka. Neophodno je odrediti amorfne lapide, dokumentaciono ih obraditi i odrediti im poziciju.
 - Takođe treba uraditi odabir značajnijih lapida i predvidjeti njihove pozicije.
 - Uporedo sa tim poslovima obavljati sanaciju nivoa cijelog prostora foruma, kao i uklanjanje viškova materijala i njihov transport na određena mjesta.
 - Istovremeno organizovati rad na konzervaciji i sanaciju dijela zidova unutar foruma, tamo gdje je ranija konzervacija popustila.
 - Paralelno treba obavljati sanaciju antičkih kanala, na način predviđen u konzervatorskom predlogu.
 - Kontinuirana i svakodnevna obrada prispjelih dokumentacionih podataka, kao i konstantna kontrola rada spoljnih saradnika.

6. TOK KONZERVATORSKIH I OSTALIH RADOVA

Radovi su započeti 4. 12. 2007 godine, konzervatorsku ekipu čine stručna lica iz RZZSK – Cetinje i Muzeji i galerije Podgorica:

- Božidar Jovičević - dip. konzervator, savjetnik konz. rukovodilac radova
- Sanja Šoljaga – dip. konzervator, stručni saradnik
- Mirjana Ivanović – dip. konzervator, stručni saradnik
- Mirjana Padalica – tehničar konzervator
- Petrica Krivokapić – tehničar konzervator
- Magdalena Radunović – dip. konzervator, savjetnik konz.
- Mirjana Mugoša – stručni saradnik

Radovi su započeli u skladu sa predlogom

- 5.2. Necessary assisting machines apparatus (lap-tops), tools and working materials, as well as necessary chemicals will be provided by RIFCMP-Cetinje.
- It is necessary to keep a work diary and all accompanying documentation.
 - Organisation of transport, conservation work and the keeping of documentation in the right order is the task of the contractor, i.e. RIFCMP-Cetinje.
 - Conservation work can start in November 2007 and will last about 30-40 working days.
- 5.2. As the planned work is varied, it is necessary that all activities should be organised in several phases.
- Firstly, the layout of the entire site should be recorded and the schedule of procedures determined. It is necessary to categorise the amorphous tombstones, assign them positions and document them.
 - Also, the important tombstones should be chosen and their positions should be decided upon.
 - The restoration of the level of the entire space should be done at the same time, as well as removing the surplus material and its transport to the determined places.
 - To organise work on the conservation and restoration of the wall parts inside the forum at the same time, in the parts where previous restoration is damaged.
 - The restoration of ancient channels should be done at the same time, in a way planned in the conservation proposal.
 - Continuous and daily work on documentation data, as well as constant work control of associates.

6. THE FLOW OF CONSERVATION AND OTHER WORKS

The works started on 4th December 2007, and the conservation team consisted of experts from RIFCMP-Cetinje and the Museum and Galleries of Podgorica:

- Božidar Jovičević – graduate conservator, advisor
- Sanja Šoljaga – graduate conservator, expert associate
- Mirjana Ivanović – graduate conservator, expert associate

konzervatorskih mjera i akcionim planom. Treba napomenuti da su svi poslovi obavljani in situ, u jako nepovoljnim zimskim uslovima.

Konzervatorska ekipa je sistematski radila na



sagledavanju situacije kompletnog prostora foruma kao i njegove neposredne okoline.

Definisane su grupe obimnog recentnog materijala unutar foruma koji je selektivno i u najvećoj mjeri deponovan na predviđena mjesta van foruma, dok je manjim dijelom tog materijala nivelisan jedan broj sonde i drugih neravnina.

Konstantno su obavljani poslovi pripreme za konzervaciju ostataka forumskog zida sa ostacima bazilike. Ovaj segment posla je rađen duži period, što je i razumljivo s obzirom na ukupnu poršinu zida od oko 210 metara dužnih. Tom prilikom su uklonjeni labilni slojevi maltera, zemlje, mahovine. Poseban problem su predstavljale višegodišnje biljke, koje svojim snažnim korijenjem razaraju kamene ostatke zida. Tokom radova na uklanjanju razvijenih biljaka sa korijenjem bilo je neophodno rastaviti pojedine kamene partije zidova, nakon čega je kameni slog vraćen u prvobitni položaj. Isti postupak je primijenjen i na prilaznom stepeništu zapadnog dijela foruma.

Nakon pripremnih radova na ostacima zidova, prišlo se konzervaciji gornjih partija, na već predviđeni način, odgovarajućim materijalom - produžni malter 1:2:5. Isti postupak je bio i na zidovima Bazilike.

Dva antička kanala na jugoistoku i jugozapadu foruma su očišćena od suvišnog zemljanog i kamenog materijala, da bi se zatim obavilo selektivno pokrivanje masivnim originalnim kamenim pločama, koje su bile u neposrednoj blizini kanala. Na taj način rekonstruisana je autentična situacija iz antičkog vremena, a unutrašnja građa kanala ostala je vizuelno dostupna.

- Mirjana Padalica – technical conservator
- Petrica Krivokapić – technical conservator
- Magdalena Radunović – graduate conservator, advisor
- Mirjana Mugoša – expert associate

The works started according to the planned proposal of conservation measures and action plan. It should be emphasized that all works were done in situ, in very bad winter conditions.

The conservation team worked systematically in viewing the existing situation, the complete forum space and its immediate surroundings.

Groups were defined of the large mass of deposited material inside the forum which was selected and moved to the places envisaged for them outside the forum, while a small amount of that material was used for levelling some of the exploratory pits and other uneven surfaces.

The preparations for conservation of the remains of forum wall with the basilica remains for conservation were carried out constantly. This segment of the work was carried out for quite a long period, which is understandable because the total wall surface extends about 210m. During this work, some parts of the plaster, earth and moss were removed. A particular problem was posed by perennial plants with strong roots which destroyed some of the stone wall remains. During the work of removing these plants, it was necessary to take apart some of the stone walls, and after that the stone wall was put back to its original position. The same procedure was applied to the entrance stairs on the west side of the forum.

After the preparatory work done on the wall remains, the conservation of the upper parts fol-



lowed according to plan with suitable material, pliable mortar, 1:2:5. The same procedure was

Kada je riječ o lapidima unutar i oko foruma, prvo je obavljena dokumentaciona obrada



i numerisanje svih lapida pojedinačno, a zatim i planiranje za konačnu prezentaciju najznačajnijih. Tokom pomenutih aktivnosti i detaljnih pretraživanja, došli smo do lapida za koje se mislilo da su izgubljeni. Radi se o lapidu većih dimenzija i težine koji na svojoj površini nosi vjerovatno lik boginje Dijane, o čemu će arheolozi dati konačno mišljenje. Takođe su na istočnom dijelu zidnih ostataka pronađeni izuzetni primjerci kamene plastike. Kako je prostor foruma ipak ograničen, to se pristupilo selektiranju lapida koji ostaju unutar foruma, i onih lapida koji će biti prezentovani van foruma. Prišlo se realizaciji ovog prilično složenog i napornog posla. Vrijedno je isticanja da nijedan predmet nije oštećen prilikom transporta sa jednog mjesta na drugo, iako je preko 200 lapida izmijenilo pozicije. Unutar foruma su raspoređeni lapidi u dva paralelna reda duž sjeverne, istočne i južne strane foruma, a sve u skladu sa ranije usvojenim elaboratom. Na ovaj način svi značajniji primjerci lapida su prezentovani i do-



stupni posjetiocima, a istovremeno je ostavljena mogućnost da se bilo koji predmet iz bilo kojih

carried out on the basilica walls.

Two ancient channels south-east and south-west of the forum were cleaned of earth and stone material surpluses, so that they could be selectively covered with the massive original stone slabs, which were near the canals channels themselves, and in that way we made a reconstruction of the original layout from ancient times, with the channel's inner composition visible.

When we talk about tombstones inside and outside the forum, the data and documentation were compiled first, as well as the numbering of all tombstones individually, and then the planning for the final presentation of the most important tombstones was carried out. During the mentioned activities and detailed researches, we came across tombstones that had been thought to be lost. It was a tombstone of larger dimensions and weight which has on its surface the face of the goddess Diana, and archaeologists have yet to give their final opinion on that. Also, on the remains of the eastern part of the wall, extraordinary examples of stone pieces were found. As the space of the forum is limited, a selection of tombstones to stay inside the forum and of those tombstones which will be presented outside the forum was made. The realization of this very complex and hard work has started. It has to be emphasized that no item was damaged during transport, although 200 tombstones changed position. Tombstones are arranged inside the forum in two parallel lines along the northern, eastern and southern sides of the forum, and all this was done in line with the previously adopted layout. In this way, all significant tombstone examples are exhibited and accessible to visitors, and at the



same time there the possibility of any item being relocated at any time and for any reason was kept

razloga može naknadno dislocirati.

Potrebno je konstatovati da je 25. 2. 2008 godine okončana ova faza poslova, i da se nastavak konzervatorskih poslova očekuje na proljeće tekuće godine.

Nastavak ili druga faza konzervatorskih radova je trajala od 12. do 26. maja 2008. godine. Pristupilo se uklanjanju raznorodnih primjesa sa površine



open.

This phase of work was completed on 25th February 2008, and the continuation of conservatory works was planned to start the following spring.

The second phase of conservatory works lasted from 12-26 May 2008 with the removal of different kinds of materials from the tombstone surfaces - layers of lichen, moss and soil sediment



lapida. Radi se o mjestimičnim slojevima lišaja, mahovine, fungi i zemljanog taloga, nanešenih višedecenijskim atmosferskim padavinama. Poslije takve obrade uslijedio je period sušenja, a nakon toga i impregnacija svih 126 kamenih lapida koji čine trenutnu postavku unutar foruma.

Obavljeno je spajanje fragmenata pojedinih lapida gdje je to bilo izvodljivo, a kod fragmenata ogromnih dimenzija, urađeno je samo fizičko približavanje.

Kod pojedinih lapida kojima su u nekim ranijim intervencijama nanijeta oštećenja u vidu izbjeljivanja kamene površine neprimjerenim hemijskim sredstvima, pokušali smo vratiti umjerenu patinu vještačkim putem.



laid down by decades of rainfall. After that work, the period of drying followed, and after that impregnation of all 126 tombstones which make exhibition inside the forum.

The rejoining of fragments of individual tombstones was done where possible and fragments of huge dimensions were just moved physically closer together.

We tried to restore those tombstones damaged by chemicals in previous conservation work artificially.



Preporuka korisniku arheološkog lokaliteta Duklje. Da bi svi navedeni poslovi imali puni efekat, treba uraditi sljedeće: početkom prvih proljećnih dana neophodno je uporno i planski sprovesti akciju suzbijanja rasta vegetacije, naročito na ostacima zidova foruma i bazilike, kako se ne bi desilo ponovno bujanje korova. U suprotnom, realno je očekivati veoma brz razvoj biljaka, koji će naknadno biti jako teško suzbiti, a kao posledica može doći do novog i intenzivnijeg razaranja zidne mase.

Recommendation to the users of the archaeological site of Doclea: in order for all mentioned works to be fully effective, the following is necessary: in early spring, prevention of the growth of vegetation should be carried out persistently and according to plan do the action of preventing vegetation to grow, especially on the remains of the forum and the basilica walls. If this is not done, realistically one can expect a rapid growth of plants which would be very hard to stop later on, and as a consequence, we could expect new and even more intensive destruction of the walls.

